

# Flat bar flange

FL



## Description

Heavy flange made from flat bar which then is hot dip galvanised. It suits both spirally swaged and lengthways swaged ducts. Oval bolt holes facilitate assembly.

Other dimensions and hole spacings can be provided for large orders.

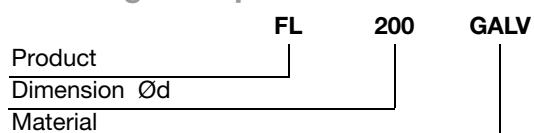
To achieve maximum airtightness between the flanges, use RJSM 12×4 as flange sealing. See separate catalogue page for RJSM.

### FL 4404

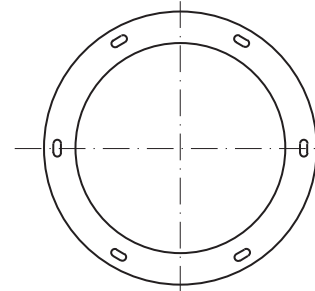
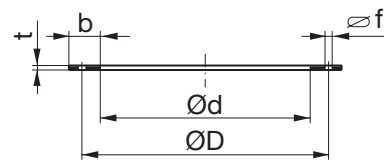
Heavy flange in stainless 4404. It suits both spirally swaged and lengthways swaged ducts. Round bolt holes facilitate assembly.



## Ordering example



## Dimensions



Mounting RJSM on to the brim of the duct or fitting as flange sealing.

# Flat bar flange

FL

## Dimensions

### FL GALV

Ød			ØD		f [mm]	Bolts to DIN 601			b × t [mm]	m [kg]	
nom [mm]	real [mm]	tolerance [mm]	real [mm]	tolerance [mm]		quantity pcs	dim	L [mm]			
80	82,5	+1,0 -0,0	108	±1,0	7,0 × 16	4	M6	16	25 × 3	0,18	
100	102		129							0,22	
112	114		141							0,25	
125	127		155							0,30	
140	142	+1,5 -0,0	176		±1,5	9,5 × 20	6	M8	20	30 × 4	0,49
150	152		184								0,52
160	162		194								0,55
180	182		213								0,60
200	203		235								0,70
224	227		259								0,74
250	253		286	0,81							
280	283		322	1,80							
300	303	341	2,02								
315	319,5	356	2,35								
355	359,5	395	2,81								
400	404,5	+2,0 -0,0	438	±1,5	11,5 × 24	16	M10	25	40 × 5	3,00	
450	454,5		487							3,15	
500	505		541							3,54	
560	565,5		605							3,90	
600	605,5		644							4,39	
630	635,5		674							4,89	
710	716		751							8,36	
800	806,5		850							9,32	
900	907		951							10,4	
1000	1007,5		1052							11,1	
1120	1128	1174	11,8								
1250	1258	1311									
1400	1410	1465									
1500	1510	1565									
1600	1610	1665									

## Flat bar flange

FL

## Dimensions

## FL 4404

Ød			ØD		b × t [mm]	Øf ±0,5	Bolts to DIN 601			m [kg]											
nom [mm]	real [mm]	tolerance [mm]	real [mm]	tolerance [mm]			quantity pcs	dim	L [mm]												
100	102	+1,0	129	±1,0	25 × 5	Ø7	4	M6	16	0,39											
125	127	-0,0	155							0,46											
140	142	+1,5 -0,0	176		30 × 5		6			M6	20	0,63									
150	152		184									0,67									
160	162		194		0,70																
180	182		213		0,78																
200	203		235		0,85																
224	227		259		0,94																
250	253		286		1,04																
280	283		322		±1,5							35 × 5	Ø9,5	M8	20	1,36					
300	303	341	1,45																		
315	319,5	356	40 × 6	16		M10	24	25	1,51												
355	359,5	395							1,68												
400	404,5	438	50 × 6	24					M10	24	25	1,88									
450	454,5	487										2,09									
500	505	541	40 × 6	16								M10				24	25	2,31			
560	565,5	605																3,55			
600	605,5	644	50 × 6	24														M10	24	25	3,79
630	635,5	674																			3,96
710	716	751	40 × 6	16	M10								24	25	4,44						
800	806,5	850													4,97						
900	907	951	50 × 6	24		M10	24	25							5,56						
1000	1007,5	1052													6,15						
1120	1128	1174	50 × 6	24					M10	24	25				8,65						
1250	1258	1311													9,61						