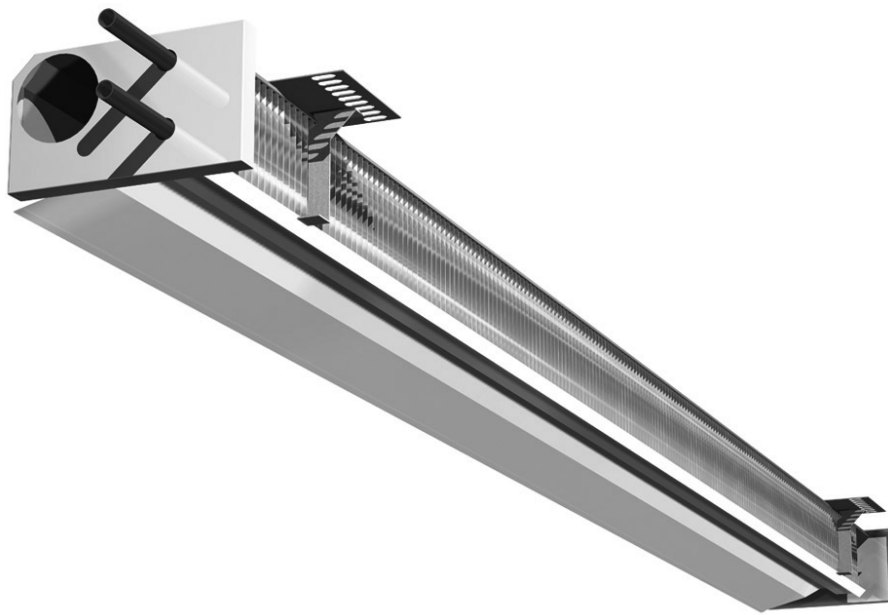




Celo

Service & maintenance



Service & maintenance

Celo

1.0 Installation

1.1 Product description

Lindab has developed a active chilled beam, Celo, which can be installed above a suspended ceiling. Thus, you can conceal the ventilation and cooling features and create an unbroken ceiling without visible technical installations. The Celo concept has been developed together with Ecophon, which provides acoustic ceilings adapted for the system.

1.2 Handling

The beam must be handled with care, ensuring that the beam does not sustain dents, scratches or bends during installation.

Always seek to lift the beam at multiple points.

- Do not lift in pipes
- Do not lift in edges
- Each beam is equipped with protective film to avoid any damage during transport and handling at building site. The film needs to be removed before commissioning the products.

1.3 Mounting instruction

- Please visit www.lindQST.com
 - Select Documentation Finder
 - Select “Celo”
 - Select “Mounting”

1.4 Air connection installation

The primary air supply should be connected with instructions from a ventilation specialist. Lindab’s chilled beams can beneficially be used together with Lindab’s Safe® duct systems.

1.5 Connection description water

Flow indication arrows are shown on the inlet and return pipes in order to assist the installer.

If the control valves have been ordered separately, a special direction of the flow must be upheld to ensure correct flow through the control valve. Please note the flow direction indicator on the valve to insure correct installation in relation to the desired flow.

When connecting a panel or a beam with the piping system either a push-on fitting or a compression coupling should be used. Lindab have tested and recommends John Guest push on fittings as well as push-on fittings from Tectite (available as accessory. See [Accessories](#)).

To avoid sound being transported over the beam, we recommend to use our flexible hoses between the piping and the beam connections. See [Accessories](#).

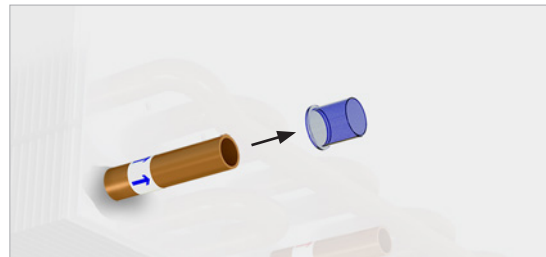
NB! Every control valve can create sound when it is installed directly connected to the water in- or outlet (or into the piping in close distance to the in- or outlet of the water product). To avoid unwanted sound generation we recommend to always use a Lindab control valve [LinFlow-A](#) (angled) or [LinFlow-S](#) (straight) and calculate the beam with the valve in [LindQST\waterborne calculator](#).

Service & maintenance

Celo

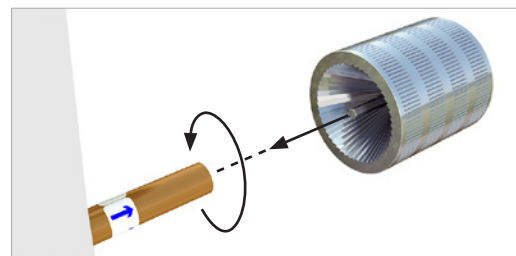
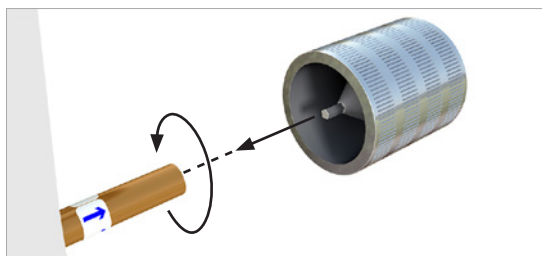
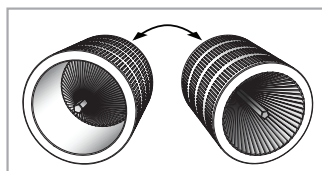
1.5.1 Before installation

Notice! The connection pipes are internally soft-welded, therefore it is not allowed to solder the beam to the pipes. For other than Lindab fittings and valves, please consult the installation guide for the specific fitting for further details on proper installation. Both inlet- and return pipes are covered by a plastic or rubber protection cover, which must be removed before installation.



After removing the protection cover, make sure that the pipe is intact and undamaged, especially at the pipe end, as even small dents and scratches potentially pose a risk of leakage in the system.

Eventually deburr the pipe ends on the inside and the outside, using a deburring tool before installation.



Always remember to do a pressure test after assembly of the pipe work.

Service & maintenance

Celo

1.5.2 Push-on valve

Mount a push-on valve to the pipe. Make sure the valve has the correct flow direction (see indication arrow on the valve) and that you have the correct valve, when integrated valve has been chosen (see indication on valve or follow cabling to Regula Connect card). Cooper inserts aren't required !

Please refer to the suppliers manual.



1.5.3 Compression fitting

While mounting a compression fitting, the pipe will be exposed to a big amount of force, creating a risk of crushing the pipe. To ensure that the pipe won't be crushed when mounting the compression fitting, a copper insert must be inserted into the pipe (always part of the delivery).

The copper insert should be placed inside the pipe on the beam. Always support the copper pipe coil when inserting the copper insert into position.

Mount a compression coupling and/or a valve to the pipe. Don't stress the nut too much, since this may crush the pipe.

Please refer to the suppliers manual.

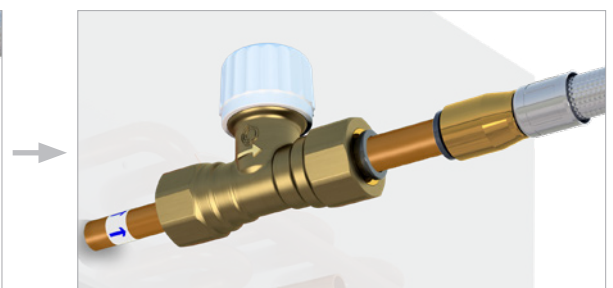
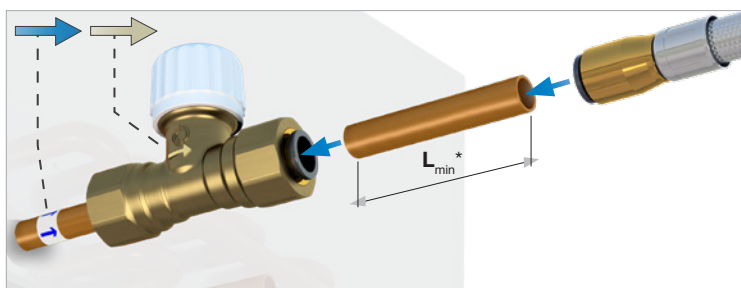
1.5.4 Flexible hoses

Our flexible hoses with straight ends can be used with both push-on and compression fitting.

We recommend to use our flexible hoses with push-on fittings, for easier and faster mounting.

For the connection to an enclosed valve with integrated push on coupling a flexible hose with straight end (male) or with push on (female) and a short copper pipe can be used.

Please refer to the suppliers manual.



* $L_{min} = 70 \text{ mm}$ (to ensure you can open the couplings again).

Lindab flexible hoses are available with straight end (male) for direct connection to Lindab valves also.

Service & maintenance

Celo

2.0 Commissioning

2.1 Product labeling





Order : xx-xxxxx		
Pos : xx		
Celo: x-x-xx-xx-xxx-Xx	x,xx m	
Pressure: xx Pa	Flow: xx l/s	
Project : xxxxxx xxxxxxxx		
Mark : xxxxx		
Nozzles: XX	Plugs: XX	Sign. XX
Product ID : XX-XX		
		

Fig.1: Label location exterior (Air connection end)

On the label you'll find:

- Order: Order identification number.
- Pos: Order position.
- Product: Product configuration.
- Project: Project name.
- Mark: Marking noted on order.
- Nozzles: Number of nozzles.
- Plugs: Number of plugged nozzles.
- Product ID: Product number.
- Sign: To be signed when checked and commissioned on site.

2.2 Measure air pressure and calculating the airflow.

Before calculating the airflow, the static nozzle pressure must first be measured. The static nozzle pressure is the air pressure available at the nozzles.

2.2.1 Measure the static nozzle pressure.

- To measure the air pressure, a manometer, analog or digital (such as the Lindab PC410) will be needed.
- Insert the measuring tube onto the specialized measuring nozzle.



- Read off the static nozzle pressure from the manometer

2.2.2 Calculating the airflow

- After measuring the static nozzle pressure, calculate the air flow per nozzle:
 $q = 0.0209 \cdot \sqrt{P}$
 q = air flow per nozzle
 P = static nozzle pressure

- After finding the air flow per nozzle, find the needed number of open nozzles:
 $q_{tot}/q = n_{open}$
 q_{tot} = total air flow
 n_{open} = open nozzles

- Alternatively, read off the needed number of nozzles in the diagram below.

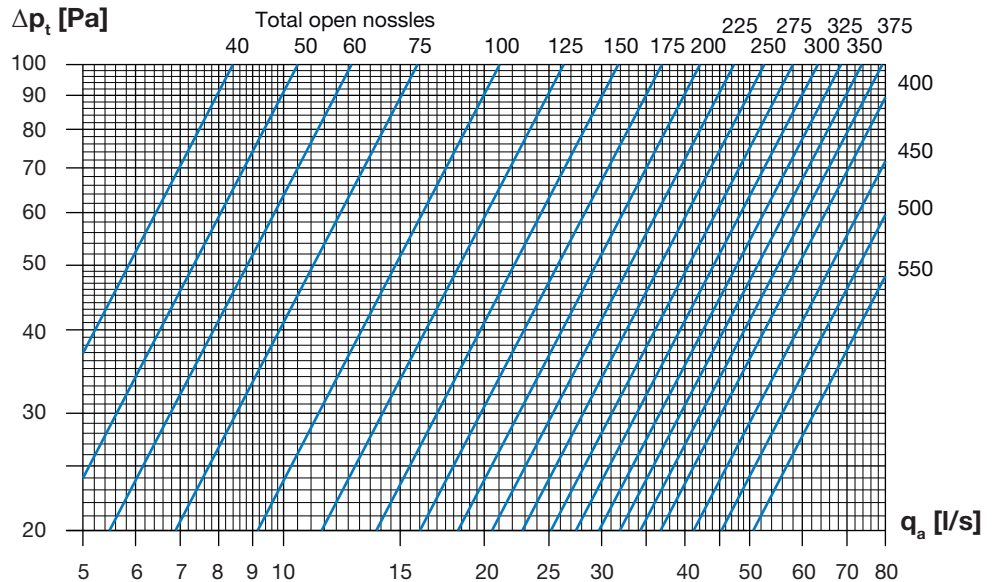


Diagram 1: Shows needed number of open nuzzles to reach a desired air flow at a given pressure.

2.3 Changing the airflow

- Measure the static nozzle pressure
- Locate the air pressure/airflow diagram on the faceplate, or see diagram 1.
- Calculate the needed number of nozzles to be plugged, in order to reach the desired airflow at the available air pressure.
- Plug or unplug nozzles to reach the desired air flow.
- Dividing the plugs evenly, will result in an even air spread.

Service & maintenance

Celo

3.0 Maintenance

The interval of cleaning depends on the indoor environment where the beam is placed. Under optimal conditions the Celo beams only need cleaning every 5 years.

3.1 Cleaning instructions

- Clean underneath the battery with a vacuum cleaner and a piece of wet cloth.
- Only use lukewarm water and a mild detergent.

4.0 Product and system specification

4.1 Material data

	Celo
Weight, kg/m	6.5
Water content, cooling, l/m	0.25
Copper pipes, quality	SS/EN 12449
Pressure class	PN10

4.2 Environmental declaration

Please follow the links below

- [Building product declaration](#)
- [Declaration of conformity](#)
- [Eurovent certificate](#)

4.3 Pressure class

The waterborne products in Lindab, active chilled beams (battery products), passive chilled beams (battery and strips products), facade units (battery) and radiant panels (strips and panels) are produced according to pressure class PN10 according to EN 1333: 2006.

This means the maximal working pressure for the products at a water temperature of 20°C must not exceed 10 bar.

4.4 Water quality

Lindab recommend water treatment and quality to be according to VDI 2035-2.

- The water preparation and maintenance for the chilled beam water circuit should be handled by a specialist
- To prevent corrosion, the water circuit must be airtight
- The water system must also be equipped with aerators to remove any build-up air in the system.
- The water should be oxygen free, to prevent corrosion.
- The water system must be filled with potable water that complies with the “EC directive 98/83/EC”.

Service & maintenance

Celo

- pH value of water must be between approximately 6-9 pH.
- The water velocities should not exceed 1m/s, and should be kept as close to the nominal flow as possible to minimize noise and optimize the energy yield.
- There should be used in-line strainers to remove dirt particles from the water.
- If the water contains any additive inhibitor this must be appropriate to use with copper and solder.

4.5 Air quality

- Primary supply air should be clean and filtered before reaching the beam.

4.6 Capacity test

- Lindabs active chilled beams are Eurovent-certified and tested according to EN-15116.





Support
Hjælp
Hjälp
Tuotetuki
Unterstützung
Supporto
Támogatás

UK - Here you can find product updates/mounting instructions and support telephone number/mail.

www.lindab.com

Right to alterations reserved.

DK - Her kan du finde seneste produkt opdateringer/montagevejledninger samt support tlf. nr/mail.

www.lindab.dk

Ret til ændringer forbeholdes.

SE - Här kan du alltid hitta senaste produktuppdateringarna/montageanvisningarna samt support tel. /e-mail.

www.lindab.se

Rätt till ändringar förbehålles.

FI - Täältä löydät uusimmat tuotetiedot ja asennusohjeet sekä tuotetuen yhteystiedot.

www.lindab.fi

Oikeus muutoksiin pidätetään.

DE - Hier finden Sie aktuelle Produktinformationen/ Montageanleitungen und Telefonnummer/ E-Mail-Adressen der Ansprechpartner.

www.lindab.de

Änderungen vorbehalten.

IT - Qui potete trovare istruzioni di montaggio, informazioni sul prodotto ed un supporto tecnico qualificato
Tel. 011 9952099 - e-mail: lindab@lindab.it

www.lindab.it

Soggetto a modifica senza obbligo di preavviso.

FR - Vous trouverez les fiches produits ou de montage actualisées ainsi que les coordonnées du support téléphonique à l'adresse suivante :

www.lindab.fr

Toutes modifications réservées.

HUN - A termékfrissítések, szerelési útmutatók, kapcsolatok elérhetők itt: **www.lindQST.com**

Ha nehezen találja meg a helyi kapcsolatot, kérjük keresse fel: **www.lindab.com**

A változtatás jogát fenntartjuk!

**Do you have trouble finding your local contacts
please go to:**

www.lindab.com

Celo-20221006